

Mapping of Urban Tanks / Rivers and Changes

Pithapuram Urban Local Body, Kakinada District, Andhra Pradesh

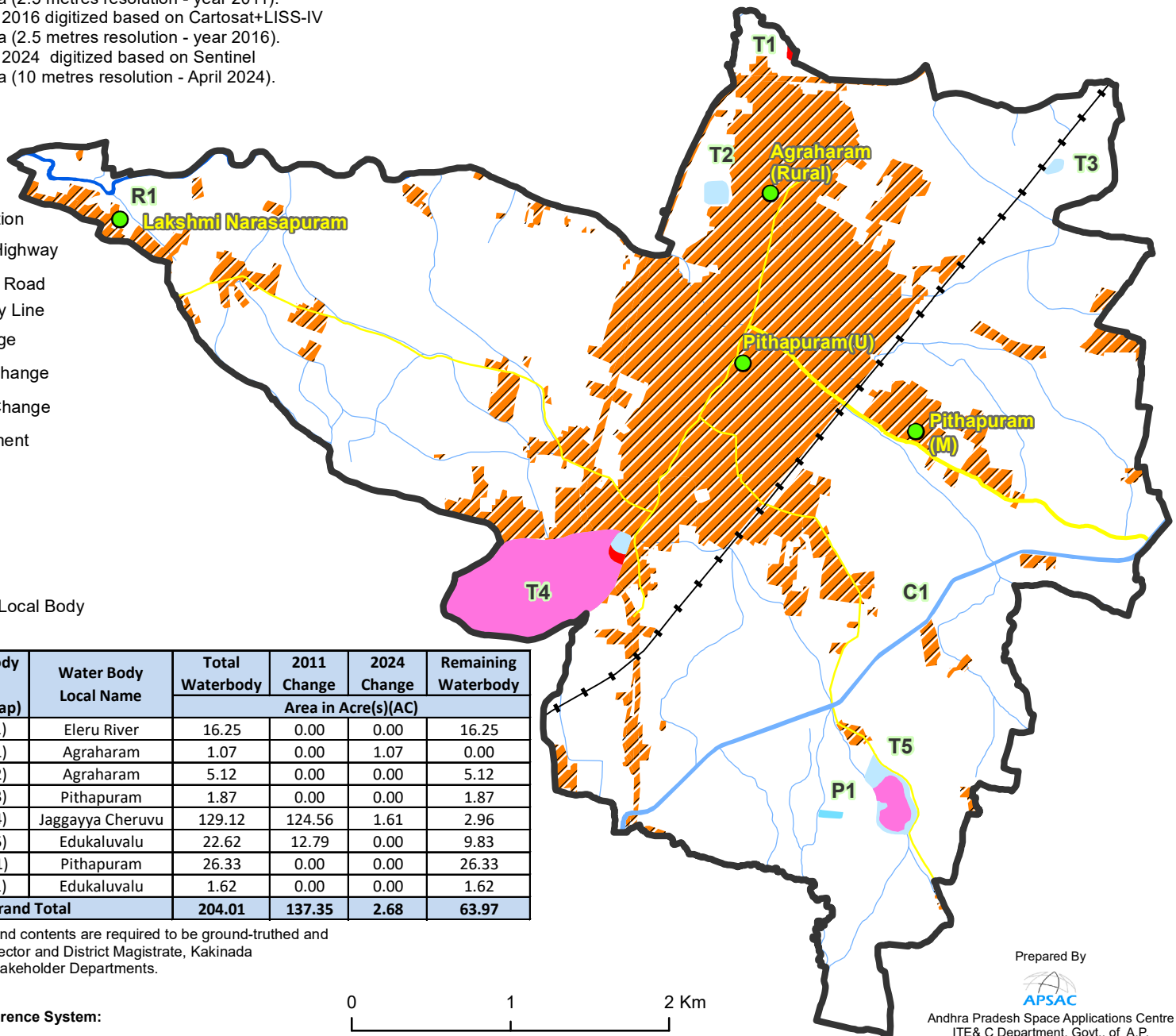


Data Source:

1. Urban Local Body Boundary provided by the Commissioner and Director of Municipal Administration, GoAP.
2. Tank / Lake / River / Reservoir / Drainage / Canal boundary digitized based on Sol Topo-sheet and Cartosat+LISS-IV Satellite Data (2.5 metres resolution) year 2011.
3. Changes of 2011 digitized based on Cartosat+LISS-IV Satellite Data (2.5 metres resolution - year 2011).
4. Changes of 2016 digitized based on Cartosat+LISS-IV Satellite Data (2.5 metres resolution - year 2016).
5. Changes of 2024 digitized based on Sentinel Satellite Data (10 metres resolution - April 2024).

Legend

- Habitation
- State Highway
- District Road
- Railway Line
- Drainage
- 2011 Change
- 2024 Change
- Settlement
- R1 River
- T1 Tank
- P1 Pond
- C1 Canal
- Urban Local Body



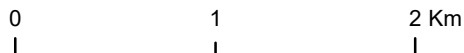
S.No	Waterbody Name (Refer Map)	Water Body Local Name	Total Waterbody	2011	2024	Remaining Waterbody
				Change	Change	
Area in Acre(s)(AC)						
1	River(1)	Eleru River	16.25	0.00	0.00	16.25
2	Tank (1)	Agraharam	1.07	0.00	1.07	0.00
3	Tank (2)	Agraharam	5.12	0.00	0.00	5.12
4	Tank (3)	Pithapuram	1.87	0.00	0.00	1.87
5	Tank (4)	Jaggayya Cheruvu	129.12	124.56	1.61	2.96
6	Tank (5)	Edukaluvalu	22.62	12.79	0.00	9.83
7	Canal(1)	Pithapuram	26.33	0.00	0.00	26.33
8	Pond(1)	Edukaluvalu	1.62	0.00	0.00	1.62
Grand Total			204.01	137.35	2.68	63.97

Note: This map and contents are required to be ground-truthed and vetted by the Collector and District Magistrate, Kakinada District and the Stakeholder Departments.

Coordinate Reference System:

Datum: WGS84

Projection: UTM Zone 44N



Prepared By



Andhra Pradesh Space Applications Centre
ITE & C Department, Govt., of A.P.
Vijayawada - 520010